



Retail Space for Lease | Kanata

Glass front retail units available to lease. Convenient on-site customer parking and building signage located on busy March Road. Prime location near the corner of Terry Fox Drive with opportunities for signage facing March Road.

Located in a highly populated residential suburb and tech hub just west of Ottawa. Commercially dense main road with constant vehicle traffic. Daytime population of approx. 25,091 within a 2 km radius. Direct access to HWY 417. Close to Innovation Station with bus stops nearby.

Price: \$15.00/sf
OPC: \$10.98/sf

Unit 10 - 1,873 sf
Unit 13 - 1,449 sf *60 Days Notice*
Unit 15 - 2,351 sf *60 Days Notice* } 3,800 sf Contiguous

CONTACT:
613-759-8383
leasing@districtrealty.com

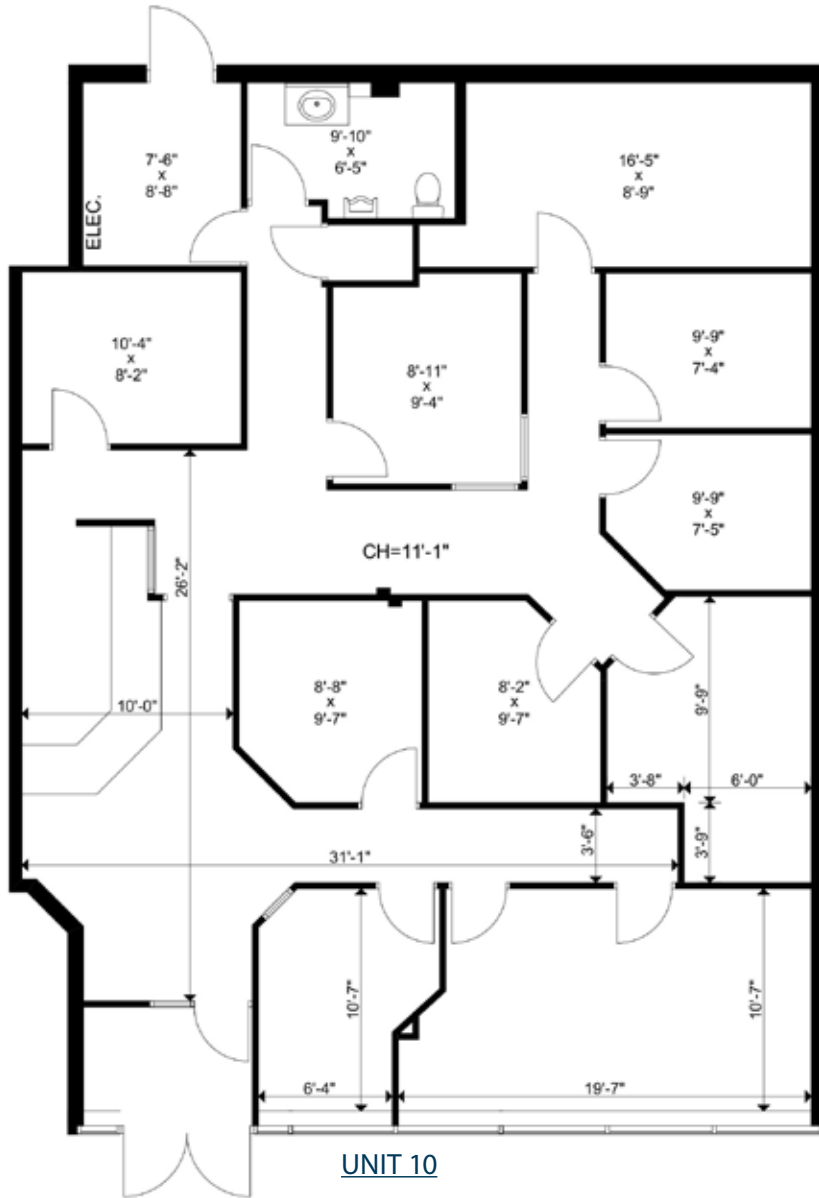
Darren Clare
Director, Leasing & Investment Sales
Sales Representative



1 591 March Road, Kanata

District Realty Corporation Brokerage
districtrealty.com





UNIT 10

-- CUSTOMER PARKING --



CONTACT:

613-759-8383

leasing@districtrealty.com

Darren Clare

Director, Leasing & Investment Sales
Sales Representative

2

591 March Road, Kanata



Google Earth

District Realty Corporation Brokerage
districtrealty.com



Integrity. Dedication. Professionalism.
RETAIL SPACE FOR LEASE

591 March Road, Kanata



Highlights

- Highly populated residential suburb and tech hub
- Shopping and dining destination with constant vehicle traffic
- Ample parking and good transit service
- Close to HWY 417 and 416
- Surrounded by major retailers, banks and personal service businesses
- On-site tenants: The Co-operators, Chicco Optical, March Veterinary Hospital, Kristen's Pet Grooming & Dog Daycare, Presotea, Harbin Chinese Restaurant



CONTACT:

613-759-8383

leasing@districtrealty.com

Darren Clare

Director, Leasing & Investment Sales
Sales Representative

3

591 March Road, Kanata

District Realty Corporation Brokerage
districtrealty.com



The information as herewith enclosed has been obtained from sources we believe to be reliable, but we make no representation or warranties, express or implied, as to the accuracy of the information. All references to square footage and other information contained herein are approximate and subject to change. Prospective Purchasers/Tenants shall not construe the information as legal advice. All properties are subject to change or withdrawal without notice.